

ΦΣ

FILENIOS WATCHES

DIAMOND-GEM-SET



www.filenios.com

Athens 2022

© All Rights Reserved

$\Phi\Sigma$ **MEN'S DIAMOND-SET WATCHES**

Looking once for the most cult watches around, I discovered Casio G-Shock(s) with “diamonds”, and found myself in the obscure position of trying to find an after-market original model with “descent” price and an “acceptable” cover work of black crystals. Out of experience, those who have the same idea are strongly advised to abstain from satisfying such a curiosity. On the other side, the market offers the “real thing” with many irrationally flashy watches that have costed ridiculous amounts of money to several celebrities who show off their vanity affairs. I should be naïve to blame the brands that make these watches, but someone has to talk to both of them!

Daring to find some balance in this very special segment, I admit that I find excellent designs in the market, and I set up some **basic rules** for the proper men's diamond-set or gem-set watches:

NUMBER ONE: Regarding the overall design, the case should be rather masculine (with rare exceptions), not necessarily large, with wide bezel providing for the best setting position of large enough precious stones. Iced out watches, fully covered with diamonds on the case and the bracelet are excluded, with one and only exception...!

NUMBER TWO: The case should be anything than yellow or pink gold, with certain exceptions depending primarily on the case design and the size/color of the stones.

NUMBER THREE: The preferable watches are simple function models without complications focusing on the case design, with rare exceptions (chronographs).

NUMBER FOUR: Only expensive brand models are selected with real precious stones. Substitutes with crystals are totally excluded for men (not for women) with one and only exception for the diachronic Rado Diastar.

NUMBER FIVE: Price wise, there are vast differences between competitive brand models due to market factors, and are not justified technically. Even if affordable, a purchase of a watch with price above 100,000 euro is a NO GO situation, given that such a budget is more than enough for some of the best complicated timepieces.

Symbolic and artistic at the same time, diamond-set watches have their own strong character, addressed to open minded buyers, next to those who swear that they would never wear such a “thing”, but at the same time, can't get their eyes of it. Moreover, in markets with limited service resources for complicated watches, a large budget is placed with more security to such alternatives. Overall, this tribute has been one of the most enjoyable works for me, thanks to the info and photo resources available in the web and mentioned herein with the proper citation.

First page photo credited to www.nicwatches.com

$\Phi\Sigma$ **MEN'S DIAMOND-SET WATCHES**

Based on a recent excellent article of Martin Green in www.quillandpad.com, historically these watches were first introduced in the US market after WWII with significant penetration and market presence till the late 1960s. Back then, Swiss brands were depending on local facilities for the case production and assembling, thus the local trends were dominant. Presented by Jaeger LeCoultre and Vacheron Constantin, one of the best examples of such watches had been the model Galaxy using two diamond markers, for hour and minute indications, set on a subdial and a transparent disk respectively. From the rest brands, Gruen, Hamilton and primarily Longines had been among the most active ones in this very particular market segment.



Photo credit www.quillandpad.com

$\Phi\Sigma$ **MEN'S DIAMOND-SET WATCHES**

The collapse of the US market coincided with the introduction of the first sporadic “factory” models from major Swiss brands, with Rolex being once again the pioneer with the Day-Date diamond-set versions since the 1960s. Focusing on this brand, the next step took place in the mid 1980s, with the introduction of a special GMT model (16758SARU), but most important with the launch of the special “bling” editions of Daytona chronographs 6269/6270, the first models from a line that has proved diachronically the most representative for men’s diamond watches, with reference numbers 16588/89/68, 116588/89/68/78, 116598SACO(2004), 116599RBOW(2012), 116576(P950/2014), 116588TBR(2019) being the preferable ones during the last 25 years.



Photo credit www.revolutionwatch.com

ΦΣ

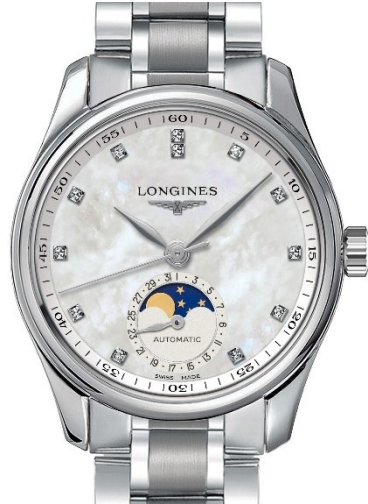
MEN'S DIAMOND-SET WATCHES

Apart from Rolex, the rest of the industry has been seriously active since the turn of the century, in the late 1990s, and naturally almost all brands engaged in the presentation of men's diamond watches belong to the luxury range. Among the most preferable models of this early period are the Breitling Chronomat & Crosswind, the Pasha de Cartier as well as the Omega Constellation collection, with indicative ref. numbers 150775/78, 15085571 and 19001151/1161/1551/1553 being "rare birds" today. Looking for the most affordable selections outside the luxury range, there are six brands worth mentioning, Technomarine, Movado with Museum Classic 607201 model, Longines, Rado, Tudor, plus the independent Hysek with Kilada model.



Technomarine has been an influential brand founded in Geneva by the French Franck Dubarry in 1997 (now belongs to Invicta group) presenting the large size Techno Diamond chronograph, addressed first to women and later on in similar designs to men as well. It has been an innovative blend design of a sporty chronograph with diamond-set bezel on alternative, even transparent, case materials. Finally, Longines and Rado provide for my most favorable watches with diamond-set dials. The first has introduced the very classic Master and Record collections, whereas the second has been established for the combination of diamonds with ceramic cases and bracelets, in models like Sintra Jubile, True, Centrix, without ignoring the retro-vintage design of certain DiaStar Jubile models like R12413703, based on the historical model of 1962.

MEN'S DIAMOND-SET WATCHES





MEN'S DIAMOND-SET TOP SELECTION WATCHES

BRAND: **BREITLING**
MODEL: **CHRONOMAT/COCKPIT/GALACTIC**
CASE MATERIAL: **STAINLESS STEEL & SSG18K**
CASE SIZE: **36-44mm APPROXIMATELY**
MOVEMENT TYPE: **AUTOMATIC**
PRODUCTION YEARS: **2004-2010-2016**
PRICE RANGE (EURO): **AROUND 5,000-10,000**

REF.NUMBERS A13356/AB011053/A3733053/A49350LA



Photo credit www.watchuseek.com, www.zeitauktion.com, www.chrono24.com

ΦΣ

MEN'S DIAMOND-SET TOP SELECTION WATCHES

BRAND: **OMEGA**
MODEL: **PLANET OCEAN MECANIQUE SAPPHIRES**
CASE MATERIAL: **STAINLESS STEEL**
CASE SIZE: **42/45mm APPROXIMATELY**
MOVEMENT TYPE: **AUTOMATIC**
PRODUCTION YEARS: **2006-2011**
PRICE RANGE (EURO): **AROUND 25,000**

REF.NUMBERS 2902-2906.5038/2912-2916.5038/2912-2916.5048



Photo credit www.estatesconsignments.com

ΦΣ**MEN'S DIAMOND-SET TOP SELECTION WATCHES**

BRAND: **CARTIER**
MODEL: **PASHA MEDIUM & LARGE**
CASE MATERIAL: **STEEL or WHITE GOLD 18K**
CASE SIZE: **35-42mm APPROXIMATELY**
MOVEMENT TYPE: **AUTOMATIC**
PRODUCTION YEARS: **2000s-2010s + RE-EDITION 2020**
PRICE RANGE (EURO): **SS up to 10,000 - WG 15,000+**

INDICATIVE REF.NUMBERS 120251 - 1202M9 - 2727 - 2735 - 5739



Photo credit www.watchcollectors.co.uk



MEN'S DIAMOND-SET TOP SELECTION WATCHES

BRAND: **CHOPARD**
MODEL: **ALPINE EAGLE SMALL**
CASE MATERIAL: **STAINLESS STEEL**
CASE SIZE: **36mm APPROXIMATELY**
MOVEMENT TYPE: **AUTOMATIC**
PRODUCTION YEARS: **2019+**
PRICE RANGE (EURO): **AROUND 12,000**

REFERENCE NUMBERS 29860-300X



Photo credit www.monochrome-watches.com

ΦΣ

MEN'S DIAMOND-SET TOP SELECTION WATCHES

BRAND: **CORUM**
 MODEL: **BUBBLE 3H & CHRONO DIVER**
 CASE MATERIAL: **SS - SS/PVD - GOLD 18K**
 CASE SIZE: **45mm APPROXIMATELY**
 MOVEMENT TYPE: **AUTOMATIC**
 PRODUCTION YEARS: **2000-2010**
 PRICE RANGE (EURO): **AROUND 3,000**

10+ MODELS - INDICATIVE REF.NUMBER 08213020/15020/15747/15797/16185/28519047



Photo credit www.ganshoren.be, www.essential-watches.com, www.chronotimepieces.com



MEN'S DIAMOND-SET TOP SELECTION WATCHES

BRAND: **HUBLOT**
MODEL: **CLASSIC FUSION & BIG BANG**
CASE MATERIAL: **STEEL - TITANIUM - CERAMIC**
CASE SIZE: **38-42mm APPROXIMATELY**
MOVEMENT TYPE: **AUTOMATIC**
PRODUCTION YEARS: **2010-2020+**
PRICE RANGE (EURO): **AROUND 10,000-15,000**

6+ MODELS - REF.NUMBERS 361SX/361CM/465SX/542NX/565NX/568CM



Photo credit www.hublot.com



MEN'S DIAMOND-SET TOP SELECTION WATCHES

BRAND: **FRANCK MULLER**
MODEL: **VANGUARD V45**
CASE MATERIAL: **STEEL or GOLD 18K**
CASE SIZE: **45x54mm APPROXIMATELY**
MOVEMENT TYPE: **AUTOMATIC**
PRODUCTION YEARS: **2015-2020+**
PRICE RANGE (EURO): **AROUND 15,000 - 50,000+**

INDICATIVE REF.NUMBERS V45 SC/SC YACHT/CH YACHT



Photo credit www.bijouxmedusa.com

ΦΣ**MEN'S DIAMOND-SET TOP SELECTION WATCHES**

BRAND: **BACKES & STRAUSS**
MODEL: **REGEND MEDIUM (+OTHER)**
CASE MATERIAL: **STEEL or WHITE GOLD 18K**
CASE SIZE: **36x43mm APPROXIMATELY**
MOVEMENT TYPE: **AUTOMATIC**
PRODUCTION YEARS: **2006-2020+**
PRICE RANGE (EURO): **AROUND 10,000 (SS) - 40,000 (WG)**

REFERENCE NUMBER 3643

Photo credit www.monochrome-watches.com



MEN'S DIAMOND-SET TOP SELECTION WATCHES

BRAND: **ROLEX**
MODEL: **DATEJUST & DAY-DATE (PRESIDENT)**
CASE MATERIAL: **SSG18K - GOLD 18K - PLATINUM**
CASE SIZE: **36/40mm APPROXIMATELY**
MOVEMENT TYPE: **AUTOMATIC**
PRODUCTION YEARS: **NEW EDITIONS 2019+**
PRICE RANGE (EURO): **AROUND 15,000-100,000**

NEW EDITIONS - REF.NUMBERS 126281/283/284-128345/348/349-228345/348/349-228396

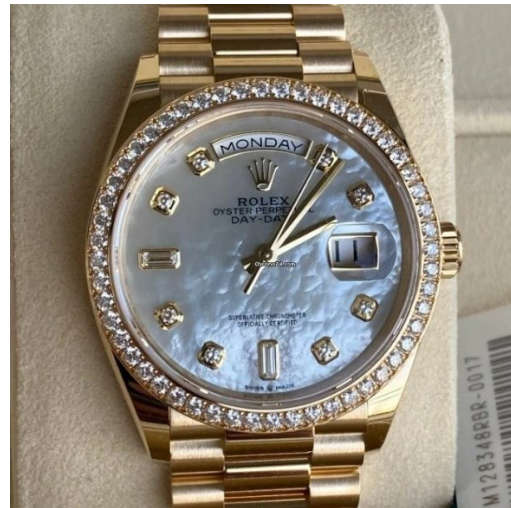


Photo credit www.chrono24.com



MEN'S DIAMOND-SET TOP SELECTION WATCHES

BRAND: **TUDOR**
MODEL: **GLAMOUR DAY-DATE/DATE**
CASE MATERIAL: **STAINLESS STEEL**
CASE SIZE: **36mm APPROXIMATELY**
MOVEMENT TYPE: **AUTOMATIC**
PRODUCTION YEARS: **2010-2020+**
PRICE RANGE (EURO): **AROUND 5,000**

REFERENCE NUMBER 55020



Photo credit www.analogshift.com, www.rolexforums.com, www.vipstation.com.hk

ΦΣ**MEN'S DIAMOND-SET TOP SELECTION WATCHES**

BRAND: **AUDEMARS PIGUET**
MODEL: **ROYAL OAK SM (+OFFSHORE)**
CASE MATERIAL: **STAINLESS STEEL**
CASE SIZE: **34/37mm APPROXIMATELY**
MOVEMENT TYPE: **AUTOMATIC**
PRODUCTION YEARS: **2012-2017-2022+**
PRICE RANGE (EURO): **MINIMUM 45,000**

REF.NUMBERS 15451/15551/77351

Photo credit www.monochrome-watches.com



MEN'S DIAMOND-SET TOP SELECTION WATCHES

BRAND: **PATEK PHILIPPE**
MODEL: **NAUTILUS MEDIUM & LARGE**
CASE MATERIAL: **STEEL or WHITE GOLD 18K**
CASE SIZE: **35-40mm APPROXIMATELY**
MOVEMENT TYPE: **AUTOMATIC**
PRODUCTION YEARS: **2006-2021+**
PRICE RANGE (EURO): **MAXIMUM 100,000**

REF.NUMBERS 5711/5713/7118



Photo credit www.watchclub.com

ΦΣ

MEN'S DIAMOND-SET TOP SELECTION WATCHES

BRAND: **PIAGET**
MODEL: **POLO MEDIUM & LARGE**
CASE MATERIAL: **STEEL/SSG18K or WHITE GOLD 18K**
CASE SIZE: **36-40mm APPROXIMATELY**
MOVEMENT TYPE: **AUTOMATIC**
PRODUCTION YEARS: **2000s/2016+**
PRICE RANGE (EURO): **AROUND 20,000**

INDICATIVE REF.NUMBERS G0A31159/G0A36014/G0A36223/G0A46019

Photo credit www.chrono24.com & www.monochrome-watches.com



MEN'S DIAMOND-SET TOP SELECTION WATCHES

BRAND: **VACHERON CONSTANTIN**
MODEL: **OVERSEAS MEDIUM**
CASE MATERIAL: **STAINLESS STEEL**
CASE SIZE: **37mm APPROXIMATELY**
MOVEMENT TYPE: **AUTOMATIC / QUARTZ**
PRODUCTION YEARS: **2016+**
PRICE RANGE (EURO): **AROUND 30,000**

REF.NUMBERS A3733053/A49350LA



Photo credit www.vacheron-constantin.com

ΦΣ**MEN'S DIAMOND-SET TOP SELECTION WATCHES**

BRAND: **FRANCK DUBARRY**
MODEL: **CRAZY WHEEL GEMMA (+OTHER)**
CASE MATERIAL: **TITANIUM or BRONZE**
CASE SIZE: **43mm APPROXIMATELY**
MOVEMENT TYPE: **AUTOMATIC (3D/D.Renaud)**
PRODUCTION YEARS: **2016+**
PRICE RANGE (EURO): **AROUND 20,000**

REF.NUMBERS CWG-01/CWG-04/CWG-05/CW0406D/CW0406D2/CWL0702



Photo credit www.franckdubarry.com



MEN'S DIAMOND-SET TOP SELECTION WATCHES

BRAND: HARRY WINSTON
MODEL: OCEAN Z PROJECTS (+OTHER)
CASE MATERIAL: GOLD 18K (USUALLY)
CASE SIZE: 42-44mm APPROXIMATELY
MOVEMENT TYPE: VARIOUS AUTOMATIC/MANUAL
PRODUCTION YEARS: 2004-2020+
PRICE RANGE (EURO): AROUND 50,000-100,000

TOURBILLON AUTOMATIC - TOURBILLON JUMP HOUR - MOONPHASE - RETROGRADE



Photo credit www.chrono24.com & www.watchrapport.com

ΦΣ

GEM-SET BLACK VENOM TRIBUTE ...



Photo credit www.blackvenomwatch.com

ΦΣ

... FOR CUSTOMIZED BLACK RAINBOW ROLEX DAYTONA



Photo credit www.blackvenomwatch.com

ΦΣ

DIAMOND-SET CARTIER TRIBUTE ...



Photo credit www.watchmydiamonds.com

ΦΣ

... FOR THE PREFERABLE BRAND MODELS



Photo credit www.watchmydiamonds.com

ΦΣ

DIAMOND-SET EXCEPTIONAL SELECTIONS ...

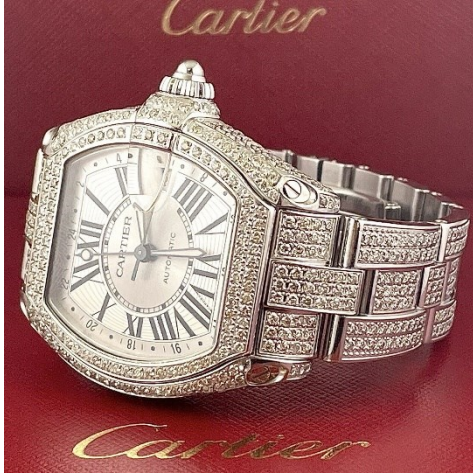


Photo credit www.ebay.com, www.chrono24.com, www.valueyourwatch.com

ΦΣ

... FOR MY MOST FAVORABLE CARTIER ROADSTER



Photo credit www.ebay.com, www.natiluxia.com

ΦΣ

DIAMOND-SET HUBLOT TRIBUTE ...

BIG BANG CHRONOGRAPHS BOA & LEOPARD LIMITED EDITIONS

BIG BANG CHRONOGRAPHS BLUE & BLACK JEANS LIMITED EDITIONS



Photo credit www.watchprosite.com, www.jackroad.co.jp, www.masterhorologer.com

ΦΣ

... FOR TAKASHI MURAKAMI PROJECT

CLASSIC FUSION CERAMIC ALL BLACK LIMITED EDITION

ROTATING BLACK PLATED PETALS WITH 456 + 107 BLACK DIAMONDS

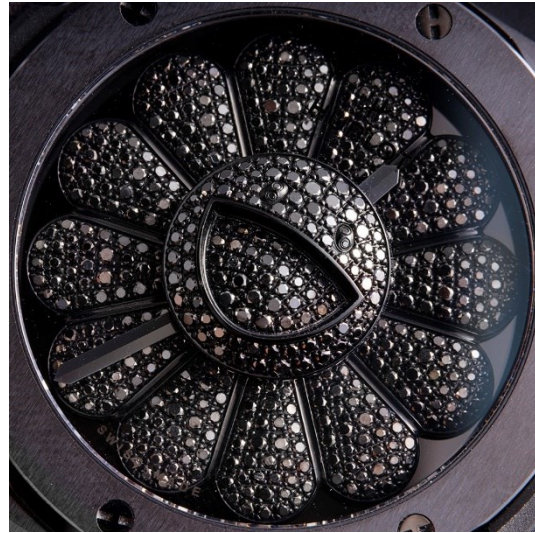


Photo credit www.deployant.com

ΦΣ

DIAMOND-SET ARTISTIC SELECTIONS ...

CORUM CLASSICAL ARTISTIC LIMITED EDITION COLLECTIONS

REFERENCE NUMBERS 254.102.65/254.102.69 & 982.202.65/982.202.69



Photo credit www.classicdriver.com, www.wannenesgroup.com

www.happywisewatch.com.hk

ΦΣ

... FOR THE FREEDOM OF CREATION

FRANCK MULLER VANGUARD DRAGON KING VR

REFERENCE NUMBER V 45 SC DT AC NR LIMITED EDITIONS



Photo credit www.orientalhorology.com

ΦΣ

GEM-SET ULTIMATE CHOICES ...

AUDEMARS PIGUET ROYAL OAK DOUBLE BALANCE OPENWORKED

REFERENCE NUMBERS 15468 37mm FROSTED GOLD & 15412 41mm GOLD



Photo credit www.watchesbysjx.com & www.hmwatches.ae

ΦΣ

... FOR YOUR EYES ONLY!

PATEK PHILIPPE NAUTILUS BAGUETTE STEEL - GOLD - PLATINUM

REFERENCE NUMBERS (Z) 5711/1300A - 5723/1R - 5711/111P - 5711/112P



Photo credit www.swisswatches-magazine.com & www.watchcharts.com

www.hmwatches.ae & www.antiquorum.swiss

ΦΣ

GEM-SET GRANDE FINALE ...

ROLEX DAYTONA "LEOPARD" & "EYE OF THE TIGER"

HUBLOT BIG BANG UNICO PARAIDA & KING GOLD FULL BAGUETTE



Photo credit www.bobwatches.com & www.ablogtowatch.com

www.watcprosite.com & www.hublot.com

ΦΣ

... FOR THE SAKE OF BEAUTY & VANITY!

BULGARI OCTO ROMA TOURBILLON - JACOB & CO EPIC X TOURBILLON

DEWITT TWENTY-8-EIGHT TOURBILLON - JLC DUOMETRE SPHEROTOURBILLON BLEU



Photo credit www.fratellowatches.com & www.oracleoftime.com

www.christies.com & www.quillandpad.com

George Serafimides